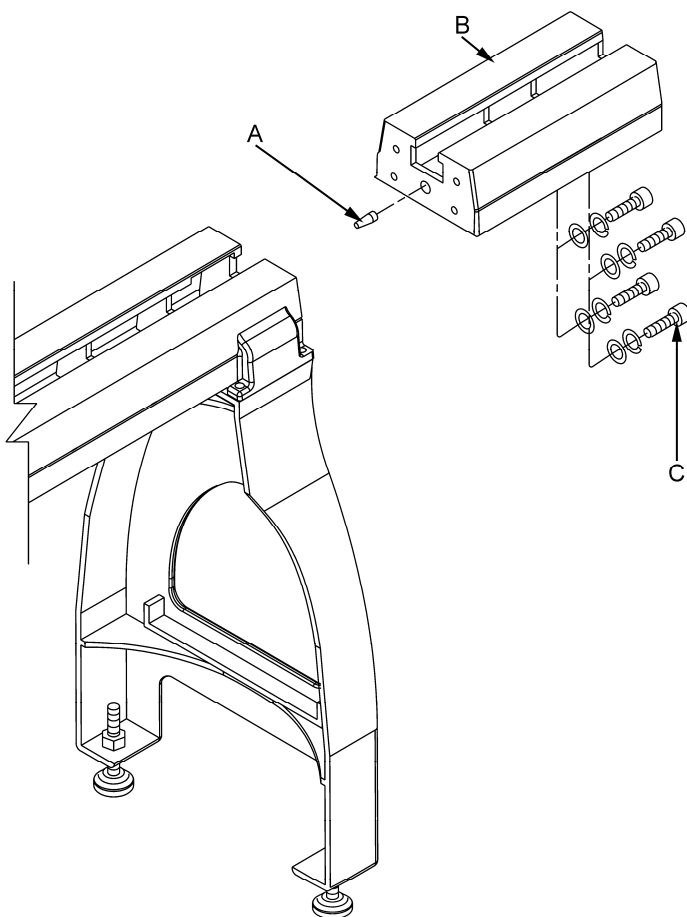




BE-20 Bed Extension 20"



Assembly

1. Tap straight end of tapered pin (A) into the centering hole on the bed extension with a wooden mallet.
2. Lift into position and line up tapered pin that is mounted into the bed extension with the matched centering hole in lathe bed.
3. Mount the bed extension (B) to your JET Wood Lathe with four 3/8"-16x1-3/4" hex socket cap screws (C), four 3/8" lock washers and four 3/8" flat washers. Snug the screws but do not tighten.
4. Move tailstock over the joint, and align the clamping nut in the center where the two beds meet. Tighten tailstock clamping lever, and tighten the four hex socket cap screws that connect the beds.
5. The stud that is located at the tailstock end of the lathe bed will need to be moved to the far end of the extension bed.

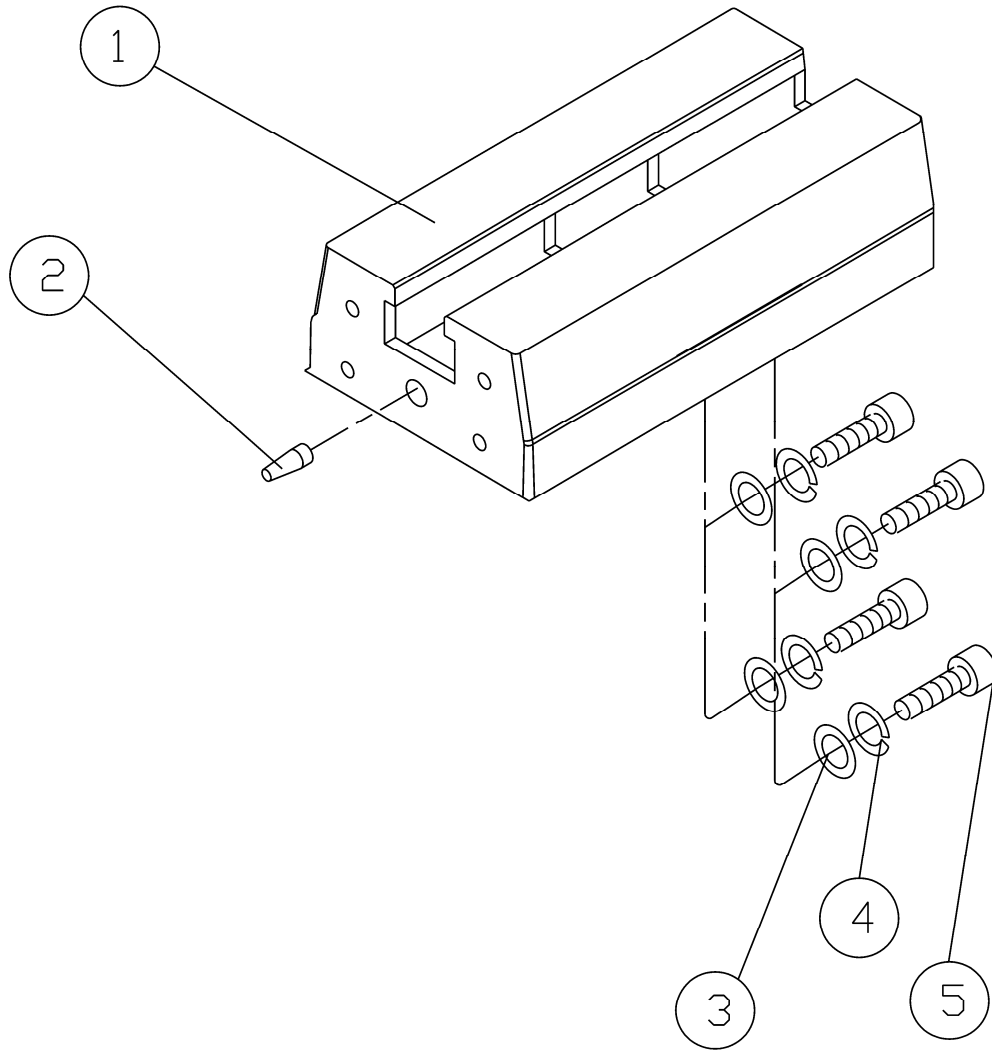
JET

427 New Sanford Road
LaVergne, Tennessee 37086
Ph.: 800-274-6848
www.jettools.com

Part No. M-708346
Revision A1 06/2014

Copyright © 2014 JET, a Division of JPW Industries, Inc.

20" Bed Extension Breakdown



20" Bed Extension Parts List

Index No.	Part No.	Description	Size	Qty.
.....	70834620" Bed Extension Assembly (includes #1-5)		
1.....	JWL1642-40120" Bed Extension		1
2.....	JWL1642-302Tapered Pin.....		1
3.....	TS-0680041Flat Washer	3/8"	4
4.....	TS-0720091Lock Washer	3/8"	4
5.....	TS-0209081Hex Socket Cap Screw.....	3/8"-16x1-3/4"	4